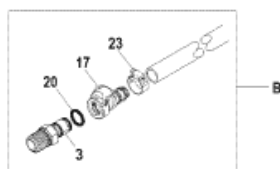


A=To Water Pickup
 B=To Block



2006

Parts List

Ref	Class	Part	Description	Qty	Comment	Footnote
1	32	864489	HOSE, Power Steering Cooler To C	1		
2	32	863343 65	HOSE, Sea Water Pump To Water	1		
3	22	862603	FITTING, Male Quick Connector, T	2		
4	32	864481	HOSE, T Fitting To Fuel Cooler	1		
5	32	863670	HOSE, Fuel Cooler To Water Distrib	1		
6	32	863490	HOSE, Water Drain Accumulator T	1		
7	22	864450	FITTING, Lower Distribution	1	(With Quick Connect Fittings)	
7	22	864989A.01	FITTING, Lower Distribution	1	(Without Quick Connect Fittings)	
8	32	863491	HOSE, Distribution Fitting To "Y" Fi	1		
9	32	863456A 1	HOSE ASSEMBLY, Lower Circulati	1		
10	32	863475	HOSE, Drain Accumulator To Tee F	1		
11	32	863810	HOSE, T Fitting To Port Elbow	1	(Inline)	
11	32	863812	HOSE, Tee Fitting To Port Elbow	1	(V-Drive)	
12	32	863613	HOSE, T Fitting To Starboard Elbow	1	(Inline)	
12	32	863813	HOSE, Tee Fitting To Starboard Elt	1	(V-Drive)	
13	32	863459	HOSE, Thermosat Housing To Star	1		
14	32	864393	HOSE, Thermosat Housing To Port	1		
15	32	864477	HOSE, Sea Water Pump To "T" Fit	1		
16	32	864478	HOSE, T Fitting To Trans Cooler	1	(Cut To Fit)	
17	22	862225	FITTING, Pushlock	4		
18	32	862317 4	HOSE, Cylinder Block Drain To Disl	2	(Port, 24 Inch) (Starboard, 17 Inch	
19	32	42850 69	HOSE, (44.00 Inches Bulk)	1	(Cut To Fit.)	
20	25	62702 1	O-RING, (.301 x .070)	4		
21	22	863478	FITTING, Tee	1		
22	22	862993	FITTING	2		
23	54	815504212	CLAMP, Worm Gear, Hose	2		
24	54	815504216	CLAMP, Worm Gear, Hose	AR		
25	54	815504222	CLAMP, Worm Gear, Hose	AR		
26	54	815504228	CLAMP, Worm Gear, Hose	1		
27	54	815504232	CLAMP, Hose	AR		
NS	19	807992 3	COVER, Hose Clamp End	A/R		